

Dress code and appearance:

Students must be in complete school uniform on all school working days. Parents should ensure that their children come neatly dressed to school and maintain good personal hygiene. Cost of uniform is not included in the school Fee.

The School uniform is a discipline in itself and should be adhered to by all the students. All students are expected to wear the school uniform as specified.

Parents are requested to ensure students are in proper uniform before leaving for School.

Girl's Summer Uniform: For Grades 1st to VIth

- Purple/Yellow T-shirt
- Beige capris
- Socks: BHIS Yellow Socks
- Shoes: Black Shoes (With Velcro for Grade I to III)

Boy's Summer Uniform: For Grades 1st to VIth

- Purple/Yellow T-shirt
- Beige Shorts
- Socks: BHIS Yellow Socks
- Shoes: Black Shoes

Girl's and Boy's Grade VIIth to Grade XIIth

- Purple/Yellow T-shirt
- Beige Cargo Pants
- Socks: BHIS Yellow Socks
- Shoes: Black Shoes

SPE (Sports and Physical Education) Uniform

- House T- shirts
- Lowers
- Sports shoes



VISUAL OF KK WINTER JACKET



SPECIFICATION/VISUAL OF KK WINTER JACKET

Specification –

- 1) Fabric : 100% cotton (Fleece Fabric)
- 2) Color – Purple & Black
- 3) Thickness : 310 GSM.
- 4) Size Available: 18 - 30

VISUAL OF BTHIS WINTER JACKET



SPECIFICATION/VISUAL OF BTHIS SEVERE WINTER JACKET

Specification –

- 1) Fabric : 100% cotton (Fleece Fabric)
- 2) Color – Purple & Black
- 3) Thickness : 310 GSM.
- 4) Size Available: 18 - 44

DESIGN/VISUALS OF KK POLO T-SHIRT FRONT AND BACK



SPECIFICATION OF KK POLO T-SHIRT

Fabric :- Polo T-shirt 100% Cotton

Colour :- Purple Colour

KK LOGO :-Embroidery of KK Logo on the Chest

Thickness:- 240 - 250 GSM

Sizes Available :- 18-32

DESIGN/VISUALS OF KK -SHORTS



DESIGN/VISUALS OF KK -SKORTS



front



back

SPECIFICATION OF SKORTS & SHORTS

Skorts and Shorts – Image attached

Fabric :- P/V Quality

Content percentage :- 67% Polyester & 33% Viscose

Belt loop and pockets

Thickness :- 200 – 210 GSM

Size Availability :- 8 - 16

DESIGN/VISUALS OF KK SPORTS UNIFORM T-SHIRT



SPECIFICATION OF KK COLLAR T-SHIRT OF KK SPORTS UNIFORM

Fabric : Polyester/Cotton. (P/C)

Content percentage : Cotton :- 80% , Polyester :-20%

Thickness : 200 GSM.

Size Availability : 18 - 28

DESIGN/VISUALS OF KK SPORTS UNIFORM TRACK



SPECIFICATION OF KK TRACK OF KK SPORTS UNIFORM

Fabric : Polyester/Cotton. (P/C)

Content percentage : Cotton :- 80% , Polyester :-20%

Thickness : 225 GSM.

Size Availability : 18 - 28

DESIGN/VISUALS OF KK SOCKS



SPECIFICATION OF KK SOCKS

Specification – Cotton Spandex

Content Percentage – 90%cotton ,10% Spandex

DESIGN/VISUALS OF BHIS T-SHIRT PURPLE FRONT AND BACK



DESIGN/VISUALS OF BHIS T-SHIRT YELLOW FRONT AND BACK



SPECIFICATION OF BHIS T-SHIRT YELLOW & PURPLE

Fabric :- 1x1, 100% Cotton

Colour :- Yellow/Purple

BHIS LOGO :- Logo Embroidery on the Front Chest, Button strip in contrast

Thickness:- 240 GSM

Sizes Available :- 24- 44

DESIGN/VISUALS OF BHIS CAPRI FRONT AND BACK



SPECIFICATION OF BHIS CAPRI

Fabric :- 67% Polyester, 33% Viscose

Colour :- Sand Beige

Thickness:- 200 GSM (+/- 5%)

Sizes Available :- 11- 22

Other Specifications - Half YKK Zipper

DESIGN/VISUALS OF BHIS SHORTS FRONT AND BACK



SPECIFICATION OF BHIS SHORTS

Fabric :- 67% Polyester, 33% Viscose

Colour :- Sand Beige

Thickness:- 200 GSM (+/- 5%)

Sizes Available :- 11- 22

Other Specifications - Half YKK Zipper

DESIGN/VISUALS OF BHIS CARGO PANT FRONT AND BACK



SPECIFICATION OF BHIS CARGO

Fabric :- 67% Polyester, 33% Viscose

Colour :- Sand Beige

Thickness:- 200 GSM (+/- 5%)

Sizes Available :- 32- 40 / 28XL – 34XL

Other Specifications - Half YKK Zipper

DESIGN/VISUALS OF BHIS HOUSE COLOUR T-SHIRT FRONT AND BACK

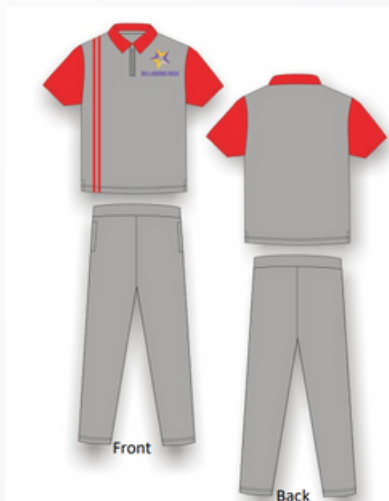
Pattern for SPA Uniform



Green House Color



Red House Color



White House Color



Blue House Color

SPECIFICATION OF BHIS HOUSE T-SHIRT

Fabric :- 80% Cotton 20% Polyester

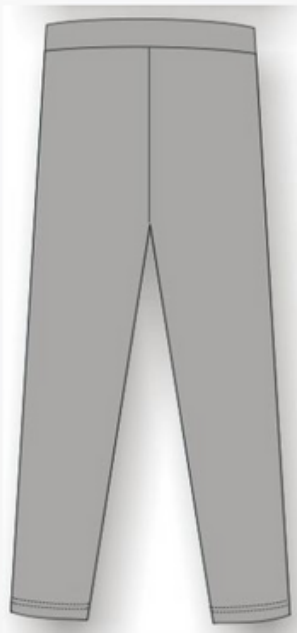
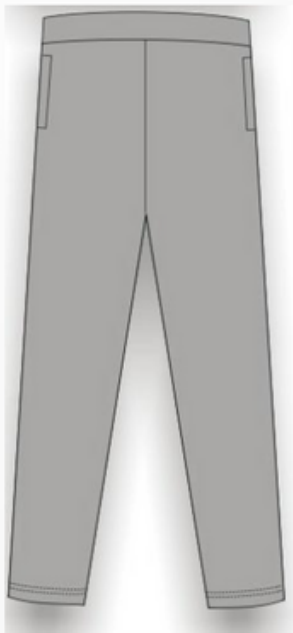
Colour :- Grey Milange

Thickness:- 240 GSM (+/- 5%)

Sizes Available :- 24 - 44

Other Specification :- House Colours (Green, Blue, Red and White) in Collars & Sleeves and 2 house colour piping in front on the left side

DESIGN/VISUALS OF BHIS TRACK FRONT AND BACK



SPECIFICATION OF BHIS TRACK

Fabric :- 80% Cotton 20% Polyester

Colour :- Grey Milange

Thickness:- 240 GSM (+/- 5%)

Sizes Available :- 24 - 42

DESIGN/VISUALS OF BHIS SOCKS



SPECIFICATION OF BHIS SOCKS

Specification – Cotton Spandex

Content Percentage – 90%cotton ,10% Lycra

Thank
you

