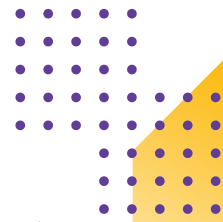




**BILLABONG HIGH**  
INTERNATIONAL SCHOOL

**NOIDA**



# Fee Structure (2025-26)

## Grade - IX to X

**1**

ADMISSION KIT

RS. 500

**2**

PROCESSING FEE

RS. 1500

**3**

ADMISSION FEE

RS. 80,000

**4**

REFUNDABLE SECURITY DEPOSIT

RS. 40,000

To be paid during admission

**5**

### SCHEDULE OF PAYMENT

	1st Quarter (Apr to Jun)	2nd Quarter (Jul to Sept)	3rd Quarter (Oct to Dec)	4th Quarter (Jan to Mar)
Composite School Fee	68,500/-	68,500/-	68,500/-	68,500/-

**6**

* Meals Charges		1st Quarter (Apr to Jun)	2nd Quarter (Jul to Sept)	3rd Quarter (Oct to Dec)	4th Quarter (Jan to Mar)
Breakfast	Quarterly	4,985/-	7,480/-	7,480/-	7,480/-
Lunch	Quarterly	6,015/-	9,020/-	9,020/-	9,020/-
* Transport Fee				Quarterly	As per Route
Adventure Camp/Picnic/Film Watching / Field Trips				As per Actual	
First In Math				Annum	1,850/-

### \* OPTIONAL FEE

This fee structure is valid for 2025-2026 only & subject to revision for the next Academic Session.



Admission Helpline : **9555125755**



Website : [www.billabonghighschoolnoida.com](http://www.billabonghighschoolnoida.com)



Email Id : [admission@billabonghighschoolnoida.com](mailto:admission@billabonghighschoolnoida.com)