

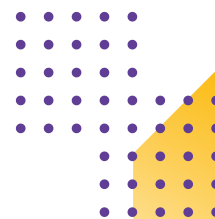


**BILLABONG HIGH**  
INTERNATIONAL SCHOOL

**NOIDA**



**Cambridge Assessment  
International Education**  
Cambridge International School



## Fee Structure (2026-27) GRADE – V Cambridge Primary

**1**

ADMISSION KIT

RS. 700

**2**

PROCESSING FEE

RS. 2000

**3**

ADMISSION FEE

RS. 90,000

**4**

REFUNDABLE SECURITY  
DEPOSIT

RS. 40,000

To be paid  
during  
admission

**5**

### SCHEDULE OF PAYMENT

	1st Quarter (Apr to Jun)	2nd Quarter (Jul to Sept)	3rd Quarter (Oct to Dec)	4th Quarter (Jan to Mar)
Composite School Fee	71,500/-	71,500/-	71,500/-	71,500/-

**6**

### LAB CHARGES - RS.2200/- PER LAB PER QUARTER

I. Physics II. Chemistry III. Biology IV. Computer Science V. Informative Practices VI. Psychology VII. Home Science

**7**

* Meals Charges		1st Quarter (Apr to Jun)	2nd Quarter (Jul to Sept)	3rd Quarter (Oct to Dec)	4th Quarter (Jan to Mar)
Breakfast	Quarterly	5,485/-	8,230/-	8,230/-	8,230/-
Lunch	Quarterly	6,615/-	9,920/-	9,920/-	9,920/-
* Transport Fee			Quarterly	As per Route	
Adventure Camp/Picnic/Film Watching / Field Trips			As per Actual		
Examination Fee			As per Actual		

### \* OPTIONAL FEE

This fee structure is valid for 2026-2027 only & subject to revision  
for the next Academic Session.



Admission Helpline : **9555125755**



Website : [www.billabonghighschoolnoida.com](http://www.billabonghighschoolnoida.com)



Email Id : [admission@billabonghighschoolnoida.com](mailto:admission@billabonghighschoolnoida.com)



**BILLABONG HIGH**  
INTERNATIONAL SCHOOL

**NOIDA**



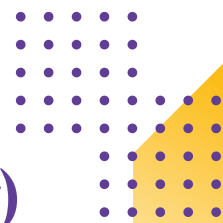
**Cambridge Assessment  
International Education**

Cambridge International School

# Fee Structure (2026-27)

## GRADE – VI to VIII

### Cambridge Lower Secondary



**1**

ADMISSION KIT

RS. 700

**2**

PROCESSING FEE

RS. 2000

**3**

ADMISSION FEE

RS. 90,000

**4**

REFUNDABLE SECURITY  
DEPOSIT

RS. 40,000

To be paid  
during  
admission

**5**

#### SCHEDULE OF PAYMENT

	1st Quarter (Apr to Jun)	2nd Quarter (Jul to Sept)	3rd Quarter (Oct to Dec)	4th Quarter (Jan to Mar)
Composite School Fee	77,000/-	77,000/-	77,000/-	77,000/-

**6**

#### LAB CHARGES - RS.2,200/- PER LAB PER QUARTER

I. Physics II. Chemistry III. Biology IV. Computer Science V. Informative Practices VI. Psychology VII. Home Science

**7**

* Meals Charges		1st Quarter (Apr to Jun)	2nd Quarter (Jul to Sept)	3rd Quarter (Oct to Dec)	4th Quarter (Jan to Mar)
Breakfast	Quarterly	5,485/-	8,230/-	8,230/-	8,230/-
Lunch	Quarterly	6,615/-	9,920/-	9,920/-	9,920/-
* Transport Fee			Quarterly	As per Route	
Adventure Camp/Picnic/Film Watching / Field Trips			As per Actual		
Examination Fee			As per Actual		

#### \* OPTIONAL FEE

This fee structure is valid for 2026-2027 only & subject to revision for the next Academic Session.



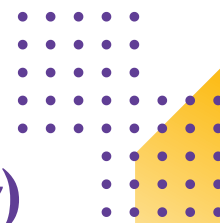
Admission Helpline : **9555125755**



Website : [www.billabonghighschoolnoida.com](http://www.billabonghighschoolnoida.com)



Email Id : [admission@billabonghighschoolnoida.com](mailto:admission@billabonghighschoolnoida.com)



# Fee Structure (2026-27)

## GRADE - IX & X

### Cambridge Upper Secondary (IGCSE)

1	ADMISSION KIT	RS. 700
2	PROCESSING FEE	RS. 2000
3	ADMISSION FEE	RS. 90,000
4	REFUNDABLE SECURITY DEPOSIT	RS. 40,000

To be paid  
during  
admission

#### 5 SCHEDULE OF PAYMENT

	1st Quarter (Apr to Jun)	2nd Quarter (Jul to Sept)	3rd Quarter (Oct to Dec)	4th Quarter (Jan to Mar)
Composite School Fee	84,700/-	84,700/-	84,700/-	84,700/-

#### 6 LAB CHARGES - RS.1,100/- PER LAB PER QUARTER

I. Physics II. Chemistry III. Biology IV. Computer Science V. Informative Practices VI. Psychology VII. Home Science

7

* Meals Charges		1st Quarter (Apr to Jun)	2nd Quarter (Jul to Sept)	3rd Quarter (Oct to Dec)	4th Quarter (Jan to Mar)
Breakfast	Quarterly	5,485/-	8,230/-	8,230/-	8,230/-
Lunch	Quarterly	6,615/-	9,920/-	9,920/-	9,920/-
* Transport Fee				Quarterly	As per Route
Adventure Camp/Picnic/Film Watching / Field Trips				As per Actual	
Examination Fee				As per Actual	

#### \* OPTIONAL FEE

This fee structure is valid for 2026-2027 only & subject to revision for the next Academic Session.



# Fee Structure (2026-27)

## GRADE – XI & XII

### Cambridge IGCSE (A & AS LEVEL)

1

ADMISSION KIT

RS. 700

2

PROCESSING FEE

RS. 2000

3

ADMISSION FEE

RS. 90,000

4

REFUNDABLE SECURITY  
DEPOSIT

RS. 40,000

To be paid  
during  
admission

5

#### SCHEDULE OF PAYMENT

	1st Quarter (Apr to Jun)	2nd Quarter (Jul to Sept)	3rd Quarter (Oct to Dec)	4th Quarter (Jan to Mar)
Composite School Fee	1,05,000/-	1,05,000/-	1,05,000/-	1,05,000/-

6

#### LAB CHARGES - RS.3,000/- PER LAB PER QUARTER

I. Physics II. Chemistry III. Biology IV. Computer Science V. Informative Practices VI. Psychology VII. Home Science

7

* Meals Charges		1st Quarter (Apr to Jun)	2nd Quarter (Jul to Sept)	3rd Quarter (Oct to Dec)	4th Quarter (Jan to Mar)
Breakfast	Quarterly	5,485/-	8,230/-	8,230/-	8,230/-
Lunch	Quarterly	6,615/-	9,920/-	9,920/-	9,920/-
* Transport Fee			Quarterly	As per Route	
Adventure Camp/Picnic/Film Watching / Field Trips			As per Actual		
Examination Fee			As per Actual		

#### \* OPTIONAL FEE

This fee structure is valid for 2026-2027 only & subject to  
revision for the next Academic Session.



Admission Helpline : 9555125755



Website : [www.billabonghighschoolnoida.com](http://www.billabonghighschoolnoida.com)



Email Id : [admission@billabonghighschoolnoida.com](mailto:admission@billabonghighschoolnoida.com)